

BKT Series...

BKT-506 and BKT-512 are Remaco "Brotherly" Plasma / LCD TV brackets. Like "brothers", BKT-506 is much smaller than BKT-512 in length. Both provides the same function and comes with tilting function to suit ones needs.



BKT-506 & BKT-512

Specifications for BKT-506 & BKT-512:

- Wall Plate: 51.0cm x 22.5cm x 1.5cm (BKT-506)
: 80.0cm x 22.5cm x 1.5cm (BKT-512)
- Tilt Angle: +/- 15 degree (BKT-506 & BKT-512)
- Twin Universal Arm: 36.0cm (BKT-506)
: 50.0cm (BKT-512)
- Depth to Wall: 7.6cm (BKT-506)
: 8.0cm (BKT-512)
- Load Capacity: 85kg (BKT-506)
: 96kg (BKT-512)

**BKT-506 for Plasma / LCD TV Panels 26" to 42"

**BKT-512 for Plasma / LCD TV Panels 37" to 62"

BKT-520 comes with a detachable hook & a locking flat rod. It allows you to prevent theft by locking your Plasma / LCD TV on the bracket.

Specifications for BKT-520:

- Wall Plate: 51.0cm x 24.5cm x 1.5cm
- Twin Universal Arm: 36.0cm
- Tilt Angle: 0 or +/- 5 degree
- Depth to Wall: 4.0cm
- Load Capacity: 80kg
- Suitable for 30" to 42" Plasma / LCD TV Panels



BKT-520

BKT-522 and BKT-532 are uniquely designed with an ease of installation. Their designs are so use-friendly that you are able to remove freely horizontally even thou your plasma is hanging up there!



BKT-522

Specifications for BKT-532:

- Frame Size: 73.0cm x 44.0cm
- Twin Universal Arm: 50.0cm
- Special design at the side thus no locking need to move with safe
- Depth to Wall: 4.3cm
- Swivel function
- Load Capacity: 60kg
- Suitable for 37" to 50" Plasma / LCD TV Panels



BKT-532

Specifications for BKT-522:

- Wall Plate: 76.8cm x 15.0cm x 1.5cm
- Twin Universal Arm: 50.0cm
- Slim Profile
- Depth to Wall: 3.0cm
- Swivel function
- Load Capacity: 75kg
- Suitable for 37" to 50" Plasma / LCD TV Panels

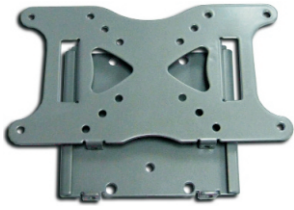
BKT-552A can be used to attach BKT-550/551/552/562.



BKT-552A
LCD Attachment Plate

- Complied to Vesa
- 50 x 50mm, 75 x 75mm,
- 100 x 100mm, 200 x 100mm
- 200 x 200mm

BKT-550 is uniquely designed with two supporting plates with sliding action for the ease of installation.

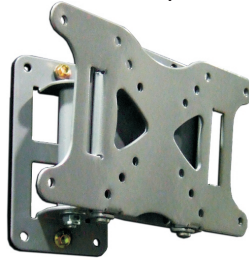


BKT-550

Specifications for BKT-550:

- Slot in to place or slot out the remove (Ease of installation)
- Size: 22.0cm x 12.0cm
- Depth to Wall: 1.9cm
- Load Capacity: 25kg
- Suitable for 10" to 32" LCD TV / Monitor
- Complied to Vesa 50 x 50mm, 75 x 75mm, 100 x 100mm, 200 x 100mm

BKT-551 comes with additional flexible pan and tilt functions, allowing a wider choice of brackets with multiple functions.



BKT-551

Specifications for BKT-551:

- Size: 22.0cm x 12.0 x 8.0cm
- Tilt Angle: +/- 75 degree
- Pan Angle: 90 degree
- Depth to Wall: 11.0cm
- Load Capacity: 23kg
- Suitable for 10" to 32" LCD TV / Monitor
- Complied to Vesa 50 x 50mm, 75 x 75mm, 100 x 100mm, 200 x 100mm



BKT-562

Specifications for BKT-562:

- Wall Mount Plate Size: 4.5cm x 17.0cm
- Plate Size (to screen): 11.5cm x 11.5cm
- Depth to Wall: From 4.0cm to 36.5cm (Articulating Arm Depth)
- Tilt Angle: +/- 70 degree
- Pan Angle: 340 degree
- Load Capacity: 15kg
- Suitable for 10" to 24" LCD TV / Monitor
- Complied to Vesa 75 x 75mm, 100 x 100mm

BKT-562, BKT-563, BKT-564 and BKT-566 are one of our best-selling mounting brackets. Designed with an extendable articulating arm and swivel function, you can move it nearer/further to you while enjoying your TV programmes. For BKT-566, you can also install with any of our Plasma / LCD TV Brackets** together to cater to different mounting requirement different brands of Plasma / LCD TV.

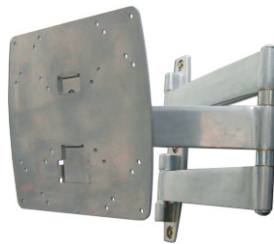
**Only applicable for Bracket: BKT-506, BKT-512, BKT-520



BKT-563

Specifications for BKT-563:

- Wall Mount Plate Size: 8.5cm x 22.5cm
- Plate Size (to screen): 23.5cm x 22.5cm
- Depth to Wall: From 4.0cm to 50.0cm (Articulating Arm Depth)
- Tilt Angle: +/- 70degree
- Pan Angle: 340 degree
- Load Capacity: 15kg
- Suitable for 10" to 24" LCD TV / Monitor
- Complied to Vesa 100 x 100mm, 200 x 200mm



BKT-564

Specifications for BKT-564:

- Wall Mount Plate Size: 6.0cm x 33.0cm
- Plate Size (to screen): 24.0cm x 22.0cm
- Depth to Wall: From 7.8cm to 59.5cm (Articulating Arm Depth)
- Tilt Angle: +/- 20 degree
- Pan Angle: 340 degree
- Load Capacity: 50kg
- Suitable for 10" to 45" LCD TV / Monitor
- Complied to Vesa 75 x 75mm, 100 x 100mm, 200 x 100mm & 200 x 200mm



BKT-566

Specifications for BKT-566:

- Wall Mount Plate Size: 13.0cm x 30.0cm
- Plate Size (to screen): 11.5cm x 19.0cm
- Depth to Wall: From 5.7cm to 63.6cm (Articulating Arm Depth)
- Pan Angle: 340 degree
- Load Capacity: 80kg
- Suitable for 10" to 62" LCD TV / Monitor
- Complied to Vesa 75 x 75mm, 100 x 100mm, 200 x 100mm & 200 x 200mm

BKT-568 is designed with an extendable articulating arm and swivel function, you can move it nearer/further to you while enjoying your TV programmes. The back plate, which mounts to the wall is 95mm wide. It includes a dual articulated arm that allows you to pull the screen away from the wall and face it in virtually any direction you want! Arms feature adjustment of viewing angle, to ensure you get the perfect view. The installation is simple.



BKT-568

Specifications for BKT-568:

- Wall Mount Plate Size: 9.0cm x 18.0cm
- Plate Size (to Screen): 44.5cm x 11.0cm
- Twin Universal Arm: 33.5cm
- Depth to Wall: From 13.0cm to 39.0cm (Articulating Arm Depth)
- Tilt Angle: +/- 15 degree
- Pan Angle: 180 degree
- Load Capacity: 40kg
- Suitable for 10" to 32" LCD TV/Monitor
- Complied to VESA 50mm, 75mm, 100mm, 200mm up to 400 x 300mm
- Ideal for other screen TV mounting, achieved by flexible extension plate and twin universal arm

