

**BKT Series...**

**BKT-506 and BKT-512** are Remaco "Brotherly" Plasma / LCD TV brackets. Like "brothers", BKT-506 is much smaller than BKT-512 in length. Both provides the same function and comes with tilting function to suit ones needs.



**BKT-506 & BKT-512**

**Specifications for BKT-506 & BKT-512:**

Wall Plate: 51.0cm x 22.5cm x 1.5cm (BKT-506)  
: 80.0cm x 22.5cm x 1.5cm (BKT-512)

Tilt Angle: +/- 15 degree (BKT-506 & BKT-512)

Twin Universal Arm: 36.0cm (BKT-506)  
: 50.0cm (BKT-512)

Depth to Wall: 7.6cm (BKT-506)  
: 8.0cm (BKT-512)

Load Capacity: 85kg (BKT-506)  
: 96kg (BKT-512)

\*\*BKT-506 for Plasma / LCD TV Panels 26" to 42"

\*\*BKT-512 for Plasma / LCD TV Panels 37" to 62"

**BKT-520** comes with a detachable hook & a locking flat rod. It allows you to prevent theft by locking your Plasma / LCD TV on the bracket.

**Specifications for BKT-520:**

Wall Plate: 51.0cm x 24.5cm x 1.5cm

Twin Universal Arm: 36.0cm

Tilt Angle: 0 or +/- 5 degree

Depth to Wall: 4.0cm

Load Capacity: 80kg

Suitable for 30" to 42" Plasma / LCD TV Panels



**BKT-520**

**BKT-522 and BKT-532** are uniquely designed with an ease of installation. Their designs are so use-friendly that you are able to remove freely horizontally even thou your plasma is hanging up there!



**BKT-522**

**Specifications for BKT-532:**

- Frame Size: 73.0cm x 44.0cm

- Twin Universal Arm: 50.0cm

- Special design at the side thus no locking need to move with safe

- Depth to Wall: 4.3cm

- Swivel function

- Load Capacity: 60kg

- Suitable for 37" to 50" Plasma / LCD TV Panels



**BKT-532**

**Specifications for BKT-522:**

- Wall Plate: 76.8cm x 15.0cm x 1.5cm

- Twin Universal Arm: 50.0cm

- Slim Profile

- Depth to Wall: 3.0cm

- Swivel function

- Load Capacity: 75kg

- Suitable for 37" to 50" Plasma / LCD TV Panels

**BKT-552A** can be used to attach BKT-550/551/552/562.



**BKT-552A**  
LCD Attachment Plate

Complied to Vesa  
50 x 50mm, 75 x 75mm,  
100 x 100mm, 200 x 100mm  
200 x 200mm

**BKT-550** is uniquely designed with two supporting plates with sliding action for the ease of installation.

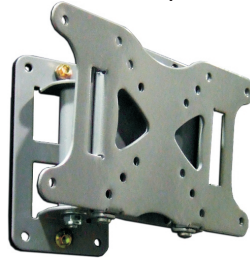


**BKT-550**

**Specifications for BKT-550:**

- Slot in to place or slot out the remove (Ease of installation)
- Size: 22.0cm x 12.0cm
- Depth to Wall: 1.9cm
- Load Capacity: 25kg
- Suitable for 10" to 32" LCD TV / Monitor
- Complied to Vesa 50 x 50mm, 75 x 75mm, 100 x 100mm, 200 x 100mm

**BKT-551** comes with additional flexible pan and tilt functions, allowing a wider choice of brackets with multiple functions.



**BKT-551**

**Specifications for BKT-551:**

- Size: 22.0cm x 12.0 x 8.0cm
- Tilt Angle: +/- 75 degree
- Pan Angle: 90 degree
- Depth to Wall: 11.0cm
- Load Capacity: 23kg
- Suitable for 10" to 32" LCD TV / Monitor
- Complied to Vesa 50 x 50mm, 75 x 75mm, 100 x 100mm, 200 x 100mm



**BKT-562**

**Specifications for BKT-562:**

- Wall Mount Plate Size: 4.5cm x 17.0cm
- Plate Size (to screen): 11.5cm x 11.5cm
- Depth to Wall: From 4.0cm to 36.5cm (Articulating Arm Depth)
- Tilt Angle: +/- 70 degree
- Pan Angle: 340 degree
- Load Capacity: 15kg
- Suitable for 10" to 24" LCD TV / Monitor
- Complied to Vesa 75 x 75mm, 100 x 100mm

**BKT-562, BKT-563, BKT-564 and BKT-566** are one of our best-selling mounting brackets. Designed with an extendable articulating arm and swivel function, you can move it nearer/further to you while enjoying your TV programmes. For BKT-566, you can also install with any of our Plasma / LCD TV Brackets\*\* together to cater to different mounting requirement different brands of Plasma / LCD TV.

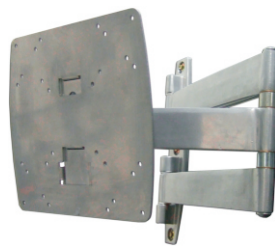
\*\*Only applicable for Bracket: BKT-506, BKT-512, BKT-520



**BKT-563**

**Specifications for BKT-563:**

- Wall Mount Plate Size: 8.5cm x 22.5cm
- Plate Size (to screen): 23.5cm x 22.5cm
- Depth to Wall: From 4.0cm to 50.0cm (Articulating Arm Depth)
- Tilt Angle: +/- 70degree
- Pan Angle: 340 degree
- Load Capacity: 15kg
- Suitable for 10" to 24" LCD TV / Monitor
- Complied to Vesa 100 x 100mm, 200 x 200mm



**BKT-564**

**Specifications for BKT-564:**

- Wall Mount Plate Size: 6.0cm x 33.0cm
- Plate Size (to screen): 24.0cm x 22.0cm
- Depth to Wall: From 7.8cm to 59.5cm (Articulating Arm Depth)
- Tilt Angle: +/- 20 degree
- Pan Angle: 340 degree
- Load Capacity: 50kg
- Suitable for 10" to 45" LCD TV / Monitor
- Complied to Vesa 75 x 75mm, 100 x 100mm, 200 x 100mm & 200 x 200mm



**BKT-566**

**Specifications for BKT-566:**

- Wall Mount Plate Size: 13.0cm x 30.0cm
- Plate Size (to screen): 11.5cm x 19.0cm
- Depth to Wall: From 5.7cm to 63.6cm (Articulating Arm Depth)
- Pan Angle: 340 degree
- Load Capacity: 80kg
- Suitable for 10" to 62" LCD TV / Monitor
- Complied to Vesa 75 x 75mm, 100 x 100mm, 200 x 100mm & 200 x 200mm

**BKT-568** is designed with an extendable articulating arm and swivel function, you can move it nearer/further to you while enjoying your TV programmes. The back plate, which mounts to the wall is 95mm wide. It includes a dual articulated arm that allows you to pull the screen away from the wall and face it in virtually any direction you want! Arms feature adjustment of viewing angle, to ensure you get the perfect view. The installation is simple.



**BKT-568**

**Specifications for BKT-568:**

- Wall Mount Plate Size: 9.0cm x 18.0cm
- Plate Size (to Screen): 44.5cm x 11.0cm
- Twin Universal Arm: 33.5cm
- Depth to Wall: From 13.0cm to 39.0cm (Articulating Arm Depth)
- Tilt Angle: +/- 15 degree
- Pan Angle: 180 degree
- Load Capacity: 40kg
- Suitable for 10" to 52" LCD TV/Monitor
- Complied to VESA 50mm, 75mm, 100mm, 200mm up to 400 x 300mm
- Ideal for other screen TV mounting, achieved by flexible extension plate and twin universal arm

